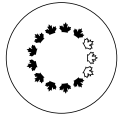


Public



NATIONAL CAPITAL COMMISSION
 COMMISSION DE LA CAPITALE NATIONALE

No.	2026-P336
To	BOARD
Date	2026-06-23

For DECISION

Subject/Title

Federal Land Use and Design Approval – Parliamentary Precinct – Centre Block Rehabilitation Program – 100% Landscape Developed Design

Summary

This submission is seeking Federal Land Use and Design Approval (FLUDA) for the 100% Landscape Developed Design for PSPC’s Centre Block Rehabilitation Program (CBRP).

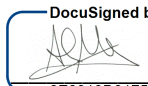
Risk Summary

No significant risks have been identified in relation to the recommendation of this submission.

Recommendation

- That the FLUDA for the Centre Block Rehabilitation Program -100% Landscape Developed Design be granted by the Board of Directors, pursuant to Section 12 of the *National Capital Act*.
- That the signature of the FLUDA letter be delegated to the Vice-President, Capital Planning Branch.

Submitted by:

DocuSigned by:

 2026-Jun-11
 8E8319D91759427...

Alain Miguelez, Vice-President, Capital Planning Branch

Public

1. Strategic Priorities

- Priority #4 - Demonstrate national leadership in achieving an environmentally sustainable and climate-resilient National Capital Region.
- Strategic Direction # 1: Foster an inclusive and meaningful National Capital Region of national significance, reflective of all Canadians, including Indigenous peoples.

2. Authority

National Capital Act, Section 12.

3. Context

Background

The Centre Block Rehabilitation Program (CBRP) is the most complex heritage rehabilitation ever undertaken in Canada by Public Services and Procurement Canada (PSPC), the Proponent. It involves the full rehabilitation of the historic Centre Block building, the construction of phases 2 and 3 of a new Parliament Welcome Centre (PWC) and changes to the landscape and exterior lighting of the Parliamentary grounds and buildings.

In addition to the individual 'Classified' Federal Heritage Building designations for Centre Block, West Block, East Block, and the Library of Parliament, the Parliament Hill Complex and the Parliament Hill Grounds also hold 'Classified' federal designations under the authority of the *Treasury Board Policy on Management of Real Property*. The Parliament Buildings and the Parliament Hill Grounds are also designated National Historic Sites of Canada under the *Historic Sites and Monuments Act*. The Parliament Hill Grounds represent an excellent Canadian example of urban and institutional landscape design, with its heritage character residing in the relationship between the grounds, the buildings, Wellington Street, and the Ottawa River.

The Parliament Hill landscape will be rehabilitated to address contemporary functional and operational requirements, and to respond to the nation's social and environmental aspirations for the future, including inclusivity, accessibility, and sustainability. In addition to addressing these requirements, the proposal aims to:

- Re-establish lost and eroded unfolding sequences of spaces and experiences and enhance human connections to the land and river;
- Improve sustainability and humanize the landscape, through the introduction of substantial tree and understory plantings;
- Introduce new amenities such as accessible circulation routes, seating, and rest areas across the site; and
- Establish new opportunities for storytelling and interpretation around the Formal Lawn and across the Perimeter Plateau.

Public

Previous Approvals

- In October 2022, the NCC's Board of Directors granted Approval for the CBRP and PWC 100% Architectural Schematic Design.
- In June 2023, the NCC's Board of Directors granted Approval for the CBRP 100% Landscape Schematic Design (excluding surface parking).
- In October 2024, the NCC's Board of Directors granted Approval for the CBRP and PWC Shell 100% Developed Design (excluding CBRP and PWC Interior End-State)

100% Landscape Developed Design Submission

The proposal herein is limited to the landscape developed design of Parliament Hill, including surface parking on either side of the Centre Block (CB) building.

The 100% Landscape Developed Design submission includes:

- 100% Developed Design Report
- 100% developed design drawing package for Landscape and Site Services, including drawings illustrating the proposed surface parking on either side of the CB building
- Design details for the proposed exterior lighting strategy, signage, and wayfinding.
- Renderings illustrating the proposed landscape design

The following design areas were not included in the 100% Developed Design submission, and will be required to be submitted to NCC FLUDTA Staff for validation as a condition of the current approval:

- Final drawings of the proposed sub-grade Vaux Wall contemporary extension
- Details related to the planting plans for the lobe planting beds
- Details related to the proposed land acknowledgement
- Further details on the bas-relief sculpture planned for the lintels above the PWC entrance on either side of the Vaux Stairs

Developed Design

The design presented in the 100% Developed Design submission is in line with what was previously submitted and approved at the 100% Landscape Schematic Design. Below is a summary of the proposed landscape work, broken down by area of work, and including any design changes since the Schematic Design approval.

Wellington Street Edge

- The area between Queen's Gate and South Drive will be regraded to make it universally accessible.
- New plantings will be introduced along the steeply sloped area between the Wellington Street Wall and South Drive.

Public

- Trees and benches will be introduced along the south side of South Drive; trees will be spaced sufficiently to ensure key views to Centre, East and West blocks remain uninterrupted.
- The existing wooden stairs at the West Pedestrian Gate will be removed, and two sets of stone stairs will be constructed at both the East and West Pedestrian Gates. These stairs will incorporate lit handrails consistent with the design developed for the family of site railings.
- Since the Schematic Landscape Design approval, detailed drawings of the proposed site furniture, including wood benches, have been provided. Single-sided benches are proposed along the south side of South Drive.

Parliamentary Forecourt

- The roadway widths of South, East and West Drives surrounding the Formal Lawn will be reduced, while the sidewalks on the lawn side will be widened to accommodate double-sided bench seating and a single row of trees along East and West Drives.
- The path on either side of the Centennial Flame will be widened to create a more comfortable space for visitors. Additionally, due to the re-grading of the Queen's Gate entrance to achieve universal accessibility, the Centennial Flame will be reinstalled at a lower elevation, including the realignment of its underground utility infrastructure.
- Since the Schematic Landscape Design approval, a detailed paving plan has been developed for the entirety of the site. The proposed paving for the central pathway consists of Tadoussac granite banding, with Stanstead granite pavers in both a sandblasted and honed finish. The two variations in finishing will create a subtle accent pattern meant to lead users toward the Parliamentary Welcome Centre (PWC) entrance. The sloped paths leading to the PWC entrance will use the same paving materials in a slightly different pattern.
- Single-sided bench seating is proposed on either side of the central pathway leading to the PWC entrance.
- The reinstatement of the Vaux Wall and Vaux central stair is consistent with the previously approved Schematic Landscape Design. The details of the new stone base extending the Vaux Wall below the existing grade to meet the new PWC entrance are to be submitted as a condition of this approval.
- Above the Vaux Wall, the proposed paving for the Vaux Terrace will be sandblasted Stanstead granite pavers, which is consistent with the site-wide pedestrian paving approach.

Perimeter Plateau

- The design concept for the Perimeter Plateau is called the 'Ribbon'. The undulating form of the Ribbon will create a generous perimeter promenade with a series of unfolding experiences as the promenade widens and narrows in width.
- Since the Schematic Design approval, design details related to the Ribbon Wall have been further developed.

Public

- The Ribbon Wall itself is comprised of carved granite blocks, wood, and steel components for seating sections. A consistent 45-degree angle is maintained throughout the seating elements with footings for greater stability.
- Sections are designed with reversed angles to the walls for the addition of future storytelling and interpretive elements. Transitional pieces such as the ‘twist’ ensures a fluid transition of the Ribbon Wall.
- The ‘twist’ design is also used to provide nooks within the Ribbon Wall that accommodate mobility devices to enable visitors to sit side-by-side regardless of ability or requirements
- Alongside the Ribbon feature are areas of native planting in tailored compositions as well as a series of winding paths that will invite pedestrians to explore the Perimeter Plateau.
- Consistent with the Schematic Design, the existing stepped pathway starting at the Canal Gate will be removed and replaced with a universally accessible pathway. The 100% Landscape Developed Design includes elements of the Ribbon Wall integrated into the Canal Gate seating areas for continuity.
- Since the Schematic Design approval, the design details related to the East Egress have also been developed. The East Egress emergency door will be at grade and the outer wall structure itself will become an integrated part of the treed landscape of the Perimeter Plateau east shoulder. The egress rooftop will prohibit public access, and a guardrail will enclose the west side of the egress walls to secure it.
- The design of the surface parking has been finalized since the Schematic Design phase. There will be a total of 123 parking stalls incorporated into two (2) parking areas on either side of the CB building within the Perimeter Plateau. These areas will be integrated into the landscape as sensitively as possible to minimize their visual impact and allow for uninterrupted areas of planting and pathways within the Plateau.
- The paving for the parking areas will consist of Stanstead granite pavers and gutters in a water-jet finish; alkyd floor paint will be used for pavement markings (parking stall demarcations in white, and accessible parking graphics in blue and white).

4. Options Analysis / NCC Staff Analysis

Regulator Advocate (FLUDTA) Analysis

Federal Approvals staff has provided advice and guidance to the Proponent throughout all phases of design. Generally, Federal Approvals staff support the 100% Landscape Developed Design submission and find it to be consistent with the previously approved 100% Schematic Landscape Design. The design approach taken conserves the heritage value and character-defining attributes of the landscape while responding to contemporary requirements and weaving new interventions together with the picturesque qualities and design of the parliamentary plateau while maintaining the formal design of the parliamentary forecourt. The following FLUDTA recommendations from previous design phases have been incorporated into the current 100% Landscape Developed Design.

Public

- The proposed east emergency exit from the PWC originally located along the Vaux Wall was relocated to the north of Canal Lane. Since the schematic design phase, the integration of this exit with the Ribbon Wall has been further developed and the design details have been refined.
- Since the schematic design phase, the Ribbon Wall has been refined, and the design details demonstrate a better integration with the surrounding landscape. The Ribbon Wall elements, notably the integrated bench seating, have been thoughtfully designed and use high-quality, noble materials that are appropriate for the context and scale of the project.
- The paving details throughout all landscape zones have been thoughtfully designed. NCC FLUDTA staff are pleased with the use of high-quality granite pavers and design excellence demonstrated in the careful paving pattern design using subtle variations in paving materials and finishes.
- The custom site furniture and signage have been thoughtfully designed and employ high-quality materials. The proposed bike parking infrastructure has also been redesigned and is located discreetly, in such a way that it will not be visually dominating or negatively impact views toward Parliament.
- NCC FLUDTA staff also note that the number of benches proposed along the central pathway toward the PWC entrance has been reduced. This is in line with previous NCC recommendations, and with the NCC Performance Criteria, to ensure that the Formal Lawn remains visually uncluttered, to the extent possible. Additionally, the benches along the central path may be removed to accommodate large gatherings and events (such as Canada Day).
- NCC staff encourage PSPC to find ways of minimizing or phasing out surface parking on Parliament Hill, as per the policy direction outlined in the Plan for Canada's Capital, 2017–2067 (2017) which calls for the reduction and gradual removal of surface parking in the Parliamentary and Judicial Precincts. NCC staff recognizes the efforts that have been made since the Schematic Design phase to integrate the surface parking areas on either side of the CB building within the landscape of the Perimeter Plateau, both by proposing treed shoulders at the perimeter of the parking areas to screen them from view as much as possible, and by employing high-quality surface materials, such as Stanstead granite pavers, rather than asphalt paving.

Planning

From a planning perspective, the proposed Landscape Developed Design for Parliament Hill is aligned with the following NCC and Government of Canada Plans and Policies:

- NCC mandate to *“Guide and control the use and development of federal lands in Canada’s Capital Region; and maintain heritage sites in Canada’s Capital Region, such as ... commemorative sites.”*
- NCC Plan for Canada’s Capital, 2017–2067: The rehabilitation of Centre Block is part of the Milestone project 1 for the renewal of the Parliamentary and Judicial Precincts.

Public

- NCC Canada’s Capital Core Area Plan (2025), containing the following goals for the Parliamentary and Judicial Precincts: “*Conserve and enhance the symbolic primacy and the visual integrity of Parliament Hill and the Supreme Court of Canada as pre-eminent national symbols*” and “*Ensure open and secure access to Parliament Hill and lawn, as well as other federal sites, for public assembly, peaceful protest, and engagement with democratic institutions.*”
- NCC Guiding Capital Interests applicable during construction of the Centre Block Rehabilitation and for the Final Project (page 12 to 16 of the FLUDA Framework).
- Parliament Hill Landscape Plan (2000)
- Long-Term Vision Plan (2006) – Guiding Principles
- Parliament Hill Landscape Plan Implementation Strategy and Guidelines (2012-2013)
- NCC Performance Criteria for interventions in the Parliamentary Lawns and Vaux Wall (2020)

FHRO Review

The Federal Heritage Review Office (FHRO) reviewed the technical considerations of the Centre Block 100% Landscape Developed Design submission. In general, the FHRO continues to have reservations about the proposed additions to the Parliamentary Forecourt, such as the proposed benches, row of trees and luminaires along the east and west drives. However, the FHRO recognizes that these elements respond to the objective of adapting the site to contemporary uses, needs, accessibility and user comfort. This capacity for evolution is inherent to the stewardship of a living heritage place and is consistent with the broader intent of the *Standards and Guidelines for the Conservation of Historic Places in Canada*.

The FHRO was generally supportive of the changes and refinements made to the design of the Perimeter Plateau since the Schematic Design approval, noting that the design reinforces the plateau’s role as a zone of transition between the formal forecourt and the more picturesque and rugged escarpment of the Hill. The FHRO also noted that the articulated buffer zones at the north-east and north-west edges of the forecourt, between Centre Block and the East and West Blocks, are consistent with this transitional role and allow the forecourt itself to retain a more austere and open identity.

Independent Design Review Panel

In 2020, the NCC and PSPC agreed to retain an Independent Design Review Panel (IDRP) to guide PSPC and CENTRUS in the development of a design solution for the new PWC including its main entrance and Forecourt landscape.

Through the IDRP process, CENTRUS developed a design option for the PWC, its entrance, and the entry sequence into the historic Centre Block building. PSPC and CENTRUS also presented the landscape design for the CBRP to the IDRP throughout

Public

earlier stages of design development, and their feedback was incorporated into the design.

While the IDRП does not constitute an advisory committee to the NCC, NCC staff generally concur with the advice provided by the IDRП, which has led to significant improvements in the evolution of design approaches for the Parliamentary Forecourt and the Wellington Street Edge.

5. Financial Details

The proposal does not involve a financial contribution from the NCC.

6. Opportunities and Expected Results

The comprehensive rehabilitation of the Parliament Hill landscape provides an opportunity to reinforce the original design intent and rehabilitate the Wellington Street Edge, Parliamentary Forecourt, and Perimeter Plateau landscape zones, so that they meet current and future needs. The high degree of respect for, and deferential integration of new elements into, the original architecture and design of the Parliamentary triad constitute the nation's most visible example of sound stewardship of a highly prominent and symbolically critical building and national institution.

Enhancing the landscape by increasing the level of comfort and access will provide parliamentarians, staff, and visitors with continued access and enjoyment for generations to come. The introduction of trees and naturalized green spaces also enhances Parliament's commitment to sustainability and the environment.

7. Alignment with Government and NCC Policies

The CBRP presents an opportunity to respond to a range of national aspirations, including the incorporation of Indigenous design elements, Accessibility and Inclusivity, and Sustainability. In response to these aspirations and through the introduction of new types of parliamentary and public space, the project prioritizes people and their central role within the nation's evolving parliamentary democracy.

Components in the Parliament Hill landscape rehabilitation that address the diverse needs of staff and visitors to Parliament Hill include: improved universal accessibility at the Queen's Gate and Canal Gate locations; new tree plantings to provide shade around the Forecourt; the use of sloped pathways wherever possible (use of steps kept to a minimum); and the integration of accessible seating into the Ribbon feature on the Perimeter Plateau. Additionally, new benches located under the proposed trees, with

Public

backrests and arms and adjacent space reserved for mobility devices, will accommodate the crowds that visit Parliament Hill and offer more frequent places to rest, helping further the goal of universal accessibility and equity of access.

8. Risks and Mitigation Measures

Risk	Likelihood	Impact	Mitigation Measure
Delay in receiving approval affects project schedule and related PSPC project agreements.	Low	Moderate	Federal Approvals staff continue to work closely with PSPC to meet project deadlines and customize approval timelines.

9. Public Engagement and Communications

The Proponent continues to consult and engage with stakeholders. The Landscape Developed Design process has undergone several coordination meetings and working sessions with various internal and external stakeholders:

- Indigenous Engagement: PSPC is committed to engagement with the host Algonquin Anishinabe Nation, as well as other First Nations, Inuit, and Métis across the country.
- PSPC continues to provide the public with regular progress reports and project updates on the CBRP via their website, which can be found at the following links:
 - [January 1 to March 31 2026: Quarterly progress report update on the Centre Block project - Canada.ca](#)
 - [Latest progress on the Centre Block project - Canada.ca](#)

10. Next Steps

- Summer/Fall 2026 – Board approval of the 100% CBRP and PWC Developed Design – Interior End State

11. List of Appendices

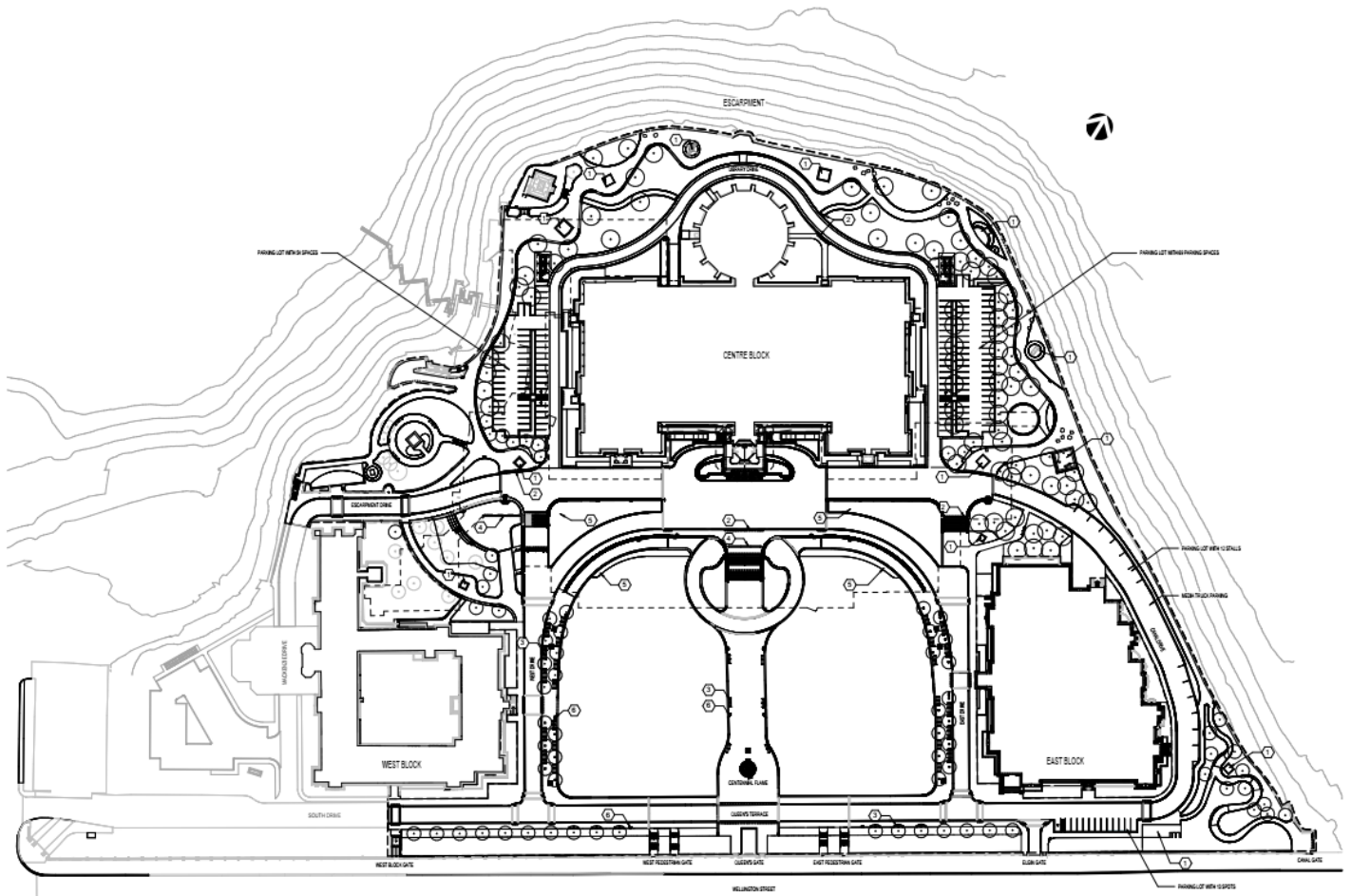
- Appendix A – Proposed Landscape Plan
- Appendix B – Proposed Landscape Key Renderings
- Appendix C – Proposed Landscape Detail Drawings

12. Authors of the Submission

Public

- Alain Miguelez, Vice-President, Capital Planning Branch (CP)
- Isabel Barrios, Director, Federal Approvals and Conservation Programs (FACP), CP
- Jason Hutchison, Chief, Federal Approvals and Environmental Compliance, FACP, CP
- Amanda Conforti, Senior Architect, FACP, CP

Appendix A – Proposed Landscape Plans



Proposed Site Plan



Proposed Rendered Landscape Plan



Close-up rendered plan of Wellington Edge, and Parliamentary Forecourt



Close-up rendered plan of Perimeter Plateau



Close-up rendered plan showing east surface parking area (centre) and East Emergency Egress (right).

Appendix B – Proposed Landscape Key Renderings



Wellington Street Edge. Increased pedestrian access at the Queen's Gate with gently sloped paths.



Wellington Street Edge. New stairs entering the Parliamentary Forecourt.



Sloped path leading to the new PWC entrance; paving pattern employs Stanstead granite pavers in two finishes (sandblasted and honed).



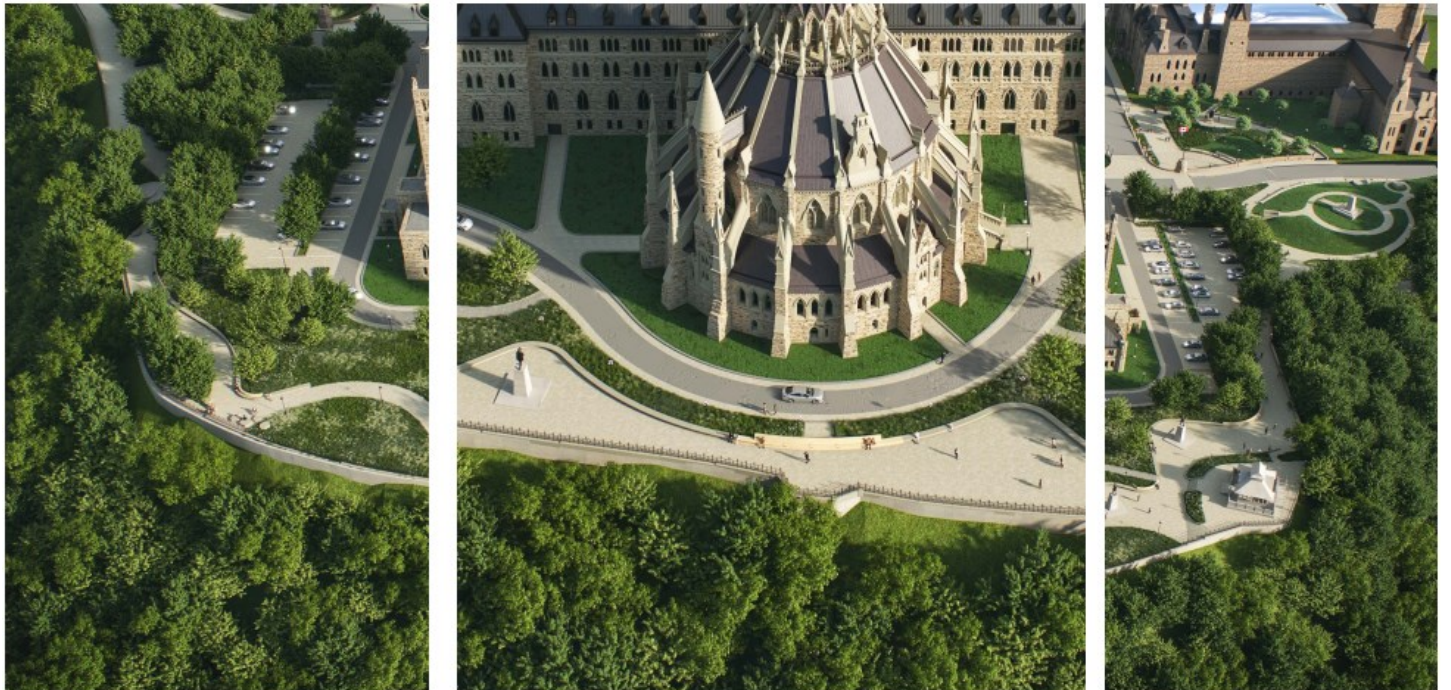
View of South Drive tree planting looking east toward East Block.



View of path along East Drive showing row of trees and double-sided wood benches.



View of path along West Drive showing row of trees and double-sided wood benches.



Perimeter Plateau landscape. Overview of Plateau landscape around Library Drive.



Perimeter Plateau landscape. Ribbon Wall seating is complemented with boulder seating area that encourages face-to-face social interaction.

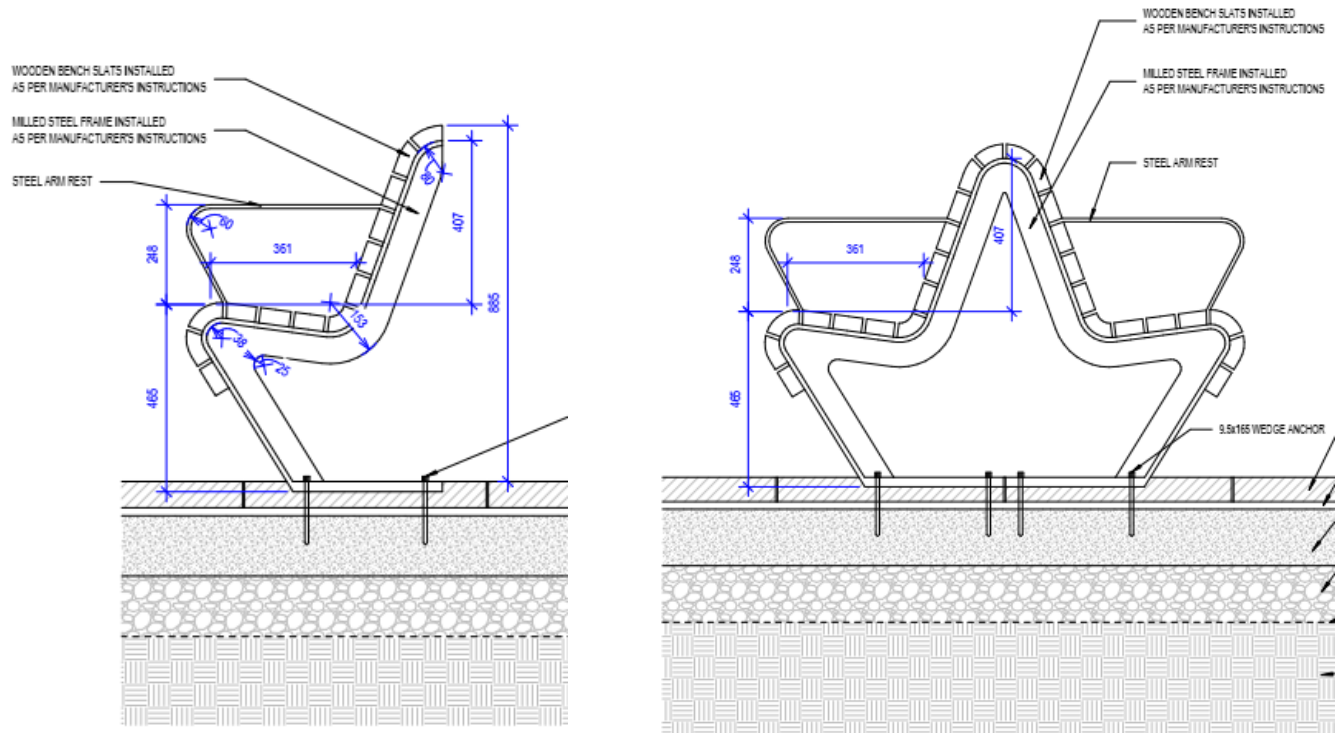


Perimeter Plateau landscape. Ribbon wall seating elements providing comfortable views of the river.

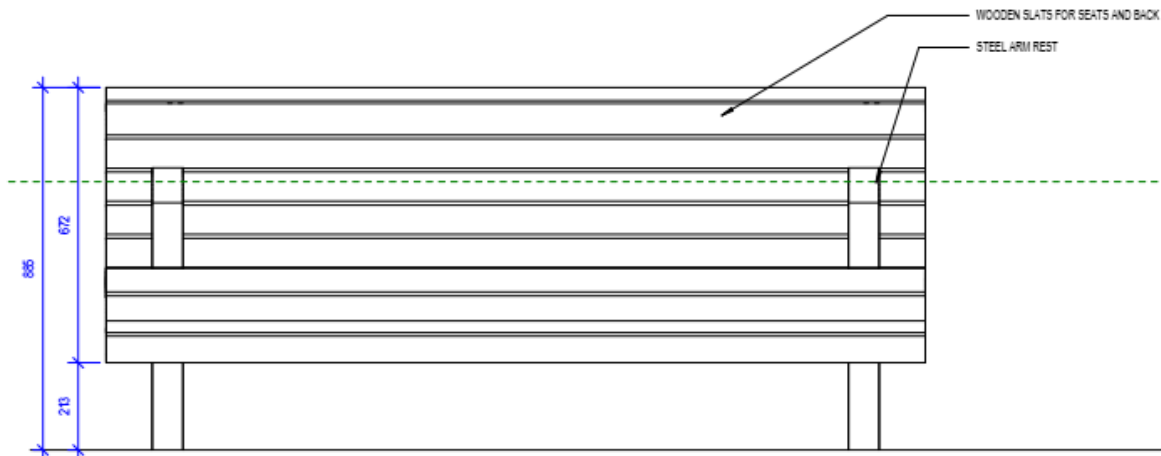


Perimeter Plateau landscape. Ribbon Wall seating with twist and nook, promoting wheelchair access and inclusion.

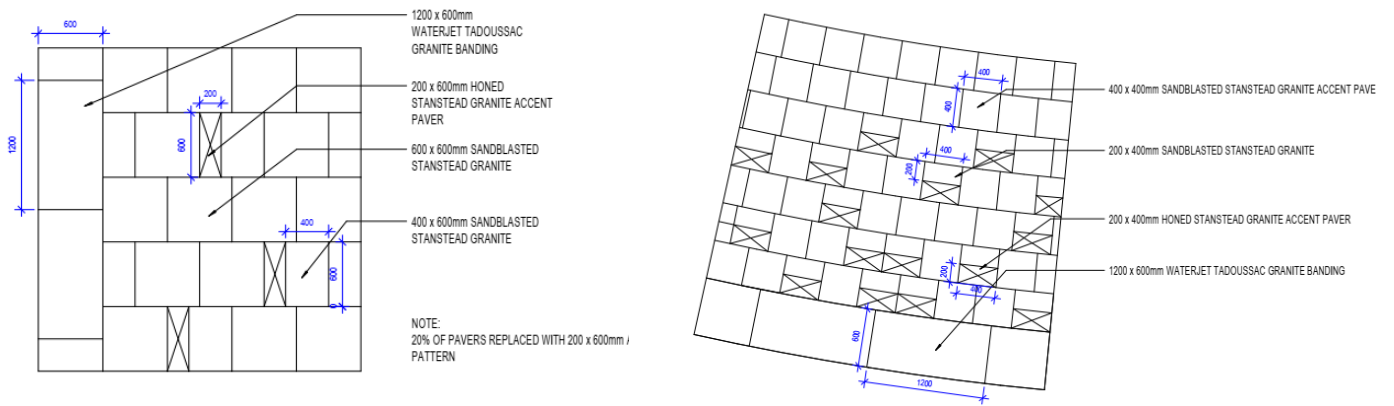
Appendix C – Proposed Landscape Detail Drawings



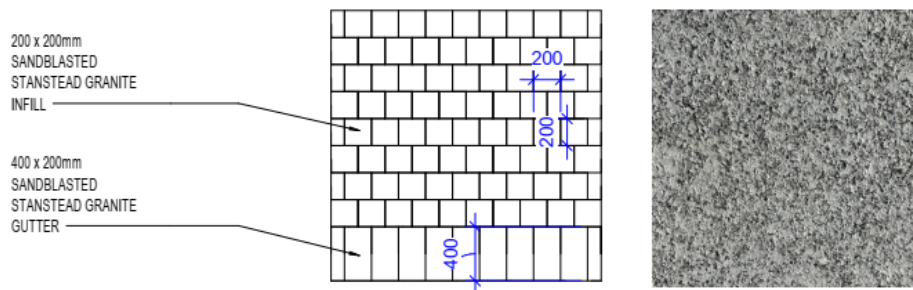
Left: Section through single-sided wood bench, with steel armrest. *Right:* Section through double-sided wood bench, with steel armrest.



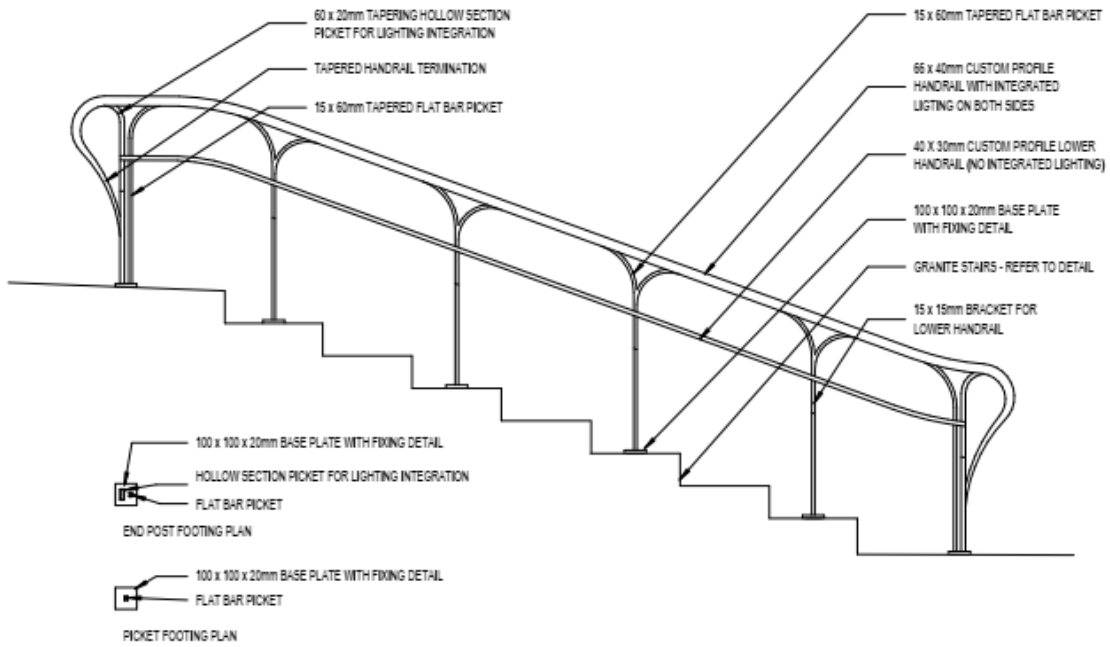
Typical front-view elevation of wood bench (single and double-sided).



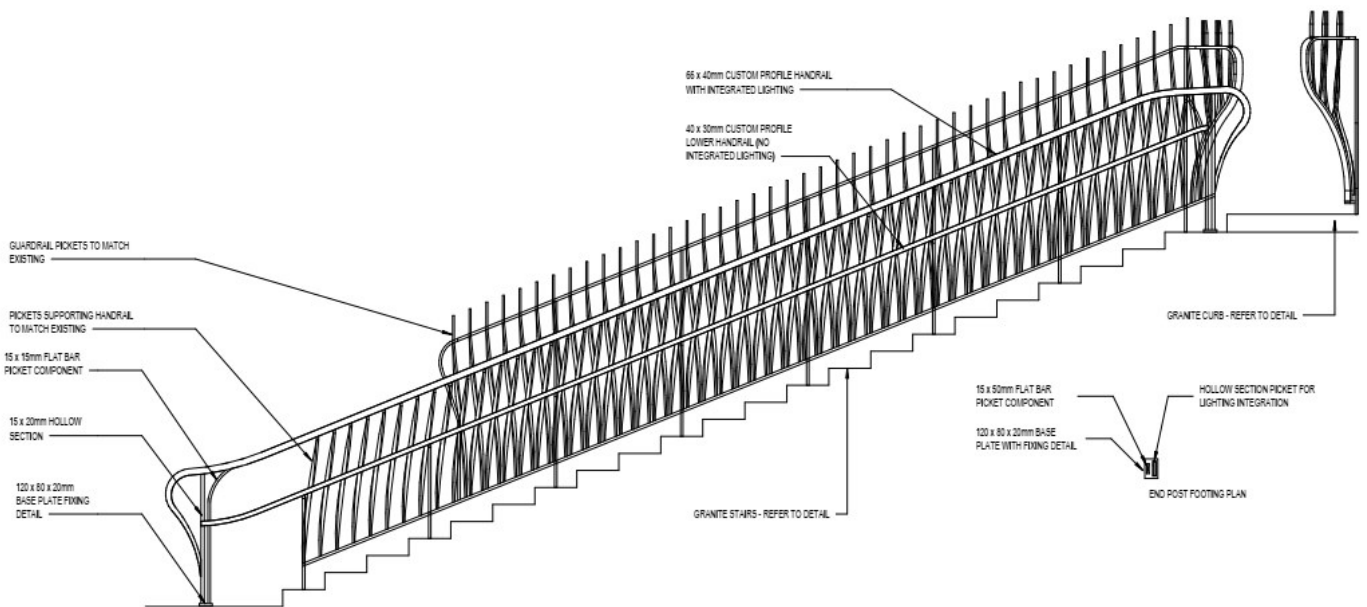
Paving details. Top: Stanstead granite in honed and sandblasted finish. Left: Paving pattern for central pathway. Right: Paving pattern for sloped pathway leading to PWC entrance.



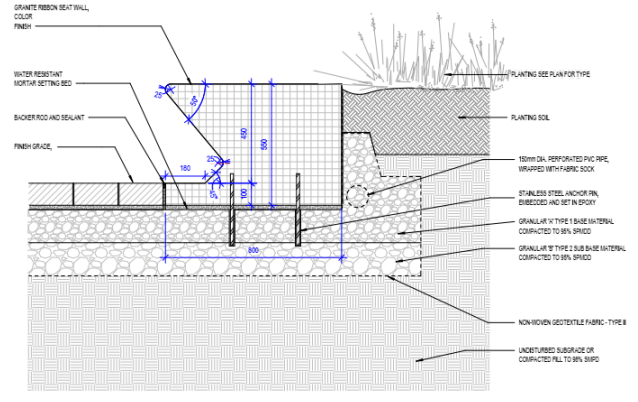
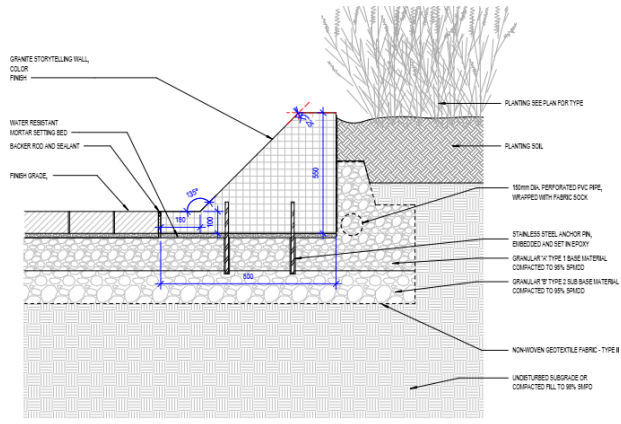
Typical site-wide pedestrian paving; Stanstead granite pavers and gutter in sandblasted finish.



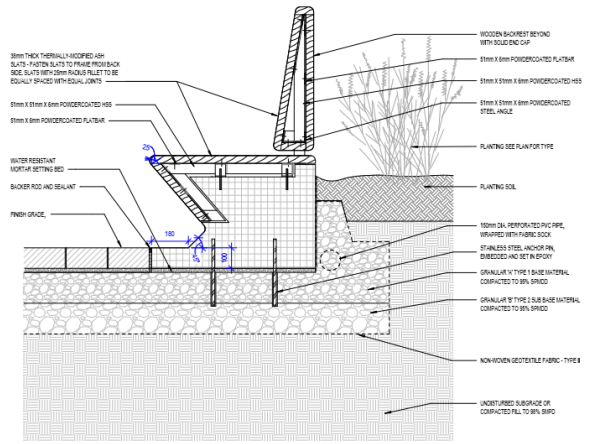
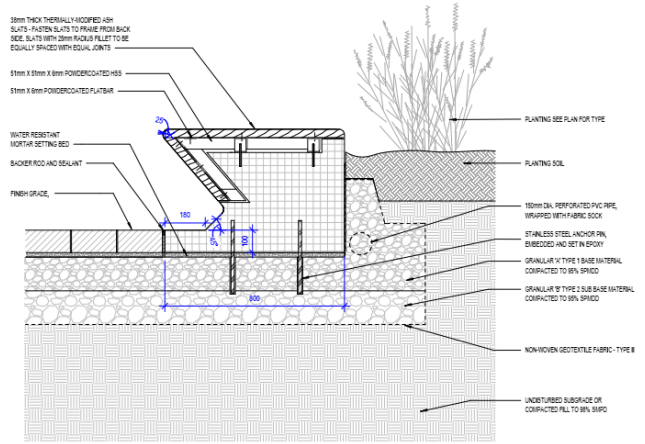
Site-wide typical handrail elevation



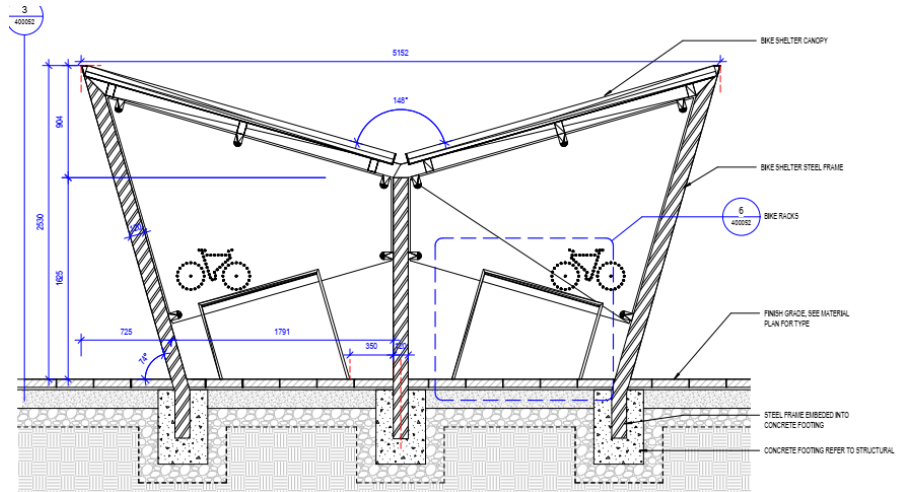
Vaux Stair typical integrated handrail elevation



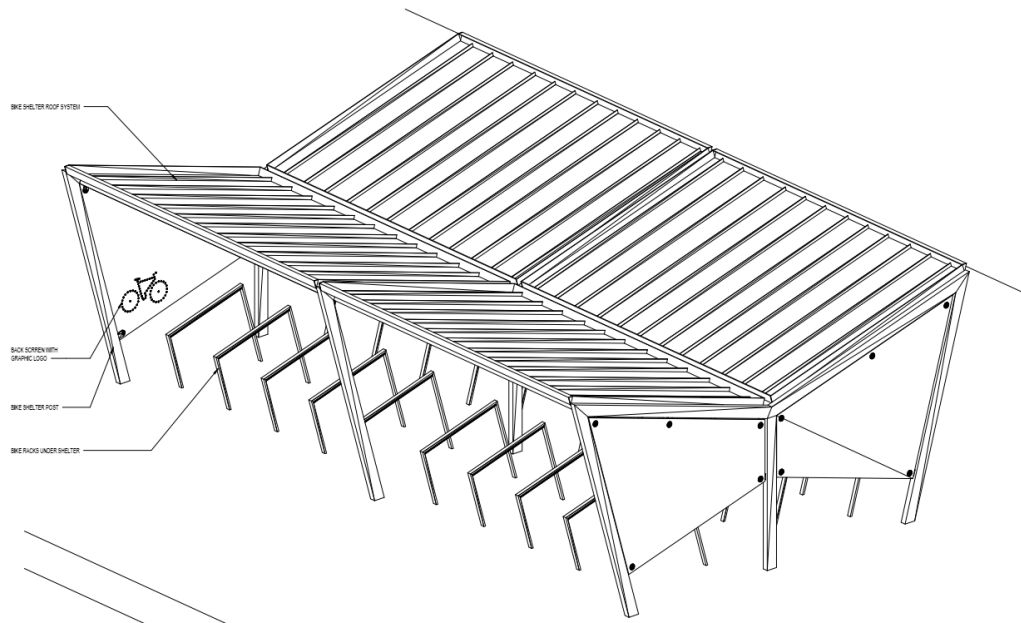
Ribbon Wall Details. *Left:* Granite storytelling wall. *Right:* Granite seating wall.



Ribbon Wall Details. *Left:* Wooden seat section. *Right:* Wooden seat section with backrest.



Section through proposed bike shelter.



Axonometric drawing of proposed bike shelter.