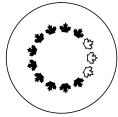


Public



NATIONAL CAPITAL COMMISSION
 COMMISSION DE LA CAPITALE NATIONALE

No.	2025 – P304
To	Board of Directors
Date	2025-01-23

For DECISION

Subject/Title

Federal Land Use Approval – Canadian Paramedic Monument – Site Selection

Summary

To obtain land use approval from the Board of Directors for the preferred site of the Canadian Paramedic Monument. Site approval provides the Canadian Paramedic Monument Foundation a reserved location for their National Commemoration and will support the Foundation’s fund-raising efforts.

Risk Summary

Existing site data indicates the presence of contaminated soil at the preferred site. This can be mitigated through designs that limit ground disturbance.

Recommendation

THAT the Federal Land Use Approval for the Canadian Paramedic Monument – Site Selection be granted, pursuant to section 12 of the *National Capital Act*.
 THAT the signature of the Federal Land Use Approval document be delegated to the Vice President, Capital Planning Branch.

Submitted by:

DocuSigned by:

 8F8319D91759427...
 Alain Miguez
 VP Capital Planning and Chief Planner

Public

1. Strategic Priorities

National Capital Commission (NCC) Corporate Plan 2024-2025 to 2028-2029 – Guiding Principal:

- Collaborate to add value as a partner with stakeholders, the public, and all levels of government to create lasting legacies.

National Capital Commission (NCC) Corporate Plan 2024-2025 to 2028-2029 – Strategic Direction #3:

- Contribute to a thriving, connected, and sustainable National Capital Region that inspires Canadians, through the planning, development, and improvement of the NCC's assets.

2. Authority

National Capital Act, Section 12

3. Context

The Canadian Paramedics Monument will honour the sacrifices of paramedics who lost their lives in the line of duty and celebrate the dedicated paramedics who risk their lives serving the people of Canada. The Canadian Paramedic Memorial Foundation (CPMF) is a registered charity established in 2012 to raise funds to build a national monument. The budget for the design and construction of the monument is estimated to be between 3 and 5 million dollars. The CPMF is led by a volunteer board of directors committed to the development and implementation of the foundation's vision for a monument in Canada's Capital Region.

The Canadian Paramedic Memorial Foundation's vision was developed in conjunction with Canadian Heritage (PCH) and was informed by the visioning session held by the NCC in May 2023:

- The Canadian Paramedic Monument will honour the heroism, skills, and sacrifices of all paramedics in Canada, and commemorate those who died saving the lives of others.
- The Canadian Paramedic Monument will create an engaging and contemplative space, where paramedics and their families can feel seen, heard, and honoured.
- The Canadian Paramedic Monument will help visitors gain insight into the complexity of the lived experience of paramedics, thereby inspiring compassion, connection, and dialogue.

Public

Canada's Paramedics are an integral part of Emergency Services throughout the country, dedicated to safety, security and the preservation of life. Their commitment to our community is reflected by:

- Canada's 40,000 paramedics working nation-wide from major cities to remote locations.
- Being mobile first responders to provide advanced trauma care as trained clinicians.
- Playing an essential front-line role helping Canadians through COVID-19 and continue to be on the frontlines fighting the ongoing opioid crisis.
- The 50 Canadian Paramedics that have lost their lives in the line of duty over the last 25 years.
- The many paramedics that suffer life-altering PTSD symptoms, resulting in high suicide rates for paramedics and former paramedics.

PCH is the overall project lead and responsible for the monument design competition. Responsibility for project management and technical services during design development and construction phases will be determined through the negotiation of a multi-party project agreement between the NCC, PCH and the Canadian Paramedic Memorial Foundation. As landowner the NCC will assume ownership of the completed monument and be responsible for the long-term operation and maintenance.

4. Options Analysis / NCC Staff Analysis

NCC staff initiated the preferred site options analysis for the monument by identifying 8 potential sites within the National Capital Region. The three overarching themes chosen to guide the preferred site analysis were (1) Healthcare. (2) Heroes/Sacrifice, and (3) Contemplative Landscapes. As a result, three sites were shortlisted responding to feedback and recommendations from stakeholders. The preferred site in Commissioners Park was then selected by CPMF based on site characteristic criteria and guidance from NCC staff.

The characteristics of the preferred site include:

- The site is on NCC land and is part of the National Interest Land Mass. It is on the edge of Commissioners Park along the Queen Elizabeth Driveway. The available space is in front of the pedestrian crosswalk, connecting the park to the Rideau Canal Western Pathway. The site is a triangular node in the NCC's pathway network.
- The expansive green lawn adjacent to Queen Elizabeth Driveway offers panoramic views of key park features.
- Proximity and views to the new Ottawa Hospital Campus (to be completed in 2028).

Public

- Association with seasonal events, programming and key federal landmarks that attract residents and tourists (Tulip Festival, Dow's Lake, and Queen Elizabeth Driveway).
- Adjacency to a vibrant community surrounding the site with attractions (Little Italy, Rideau Canal UNESCO world heritage site, Central Experimental Farm and the Dominion Arboretum).
- Accessibility along primary traffic routes for local and tourist access. The site will be accessible by public transit (Dow's Lake O-Train Station) and active transportation (Rideau Canal Capital Pathway). The City of Ottawa's Transportation Master Plan calls for transit priority on Carling Avenue.
- The site is very visible from many view points, including Queen Elizabeth Driveway, Dow's Lake and Commissioner' Park.
- Developable Size of the site is 130 m² with surrounding flex space of 530 m² for larger gatherings. This could accommodate a 200+ person commemorative gathering on an annual basis.
- The site will be accessible year-round and at all hours of the day, reflecting the nature of the profession.
- The site will be reserved for the Canadian Paramedic Memorial Foundation for a period of 3 years from the date of the Federal Land Use Approval.

5. Financial Details

Not Applicable

6. Opportunities and Expected Results

Compatibility of monument with the preferred site and future adjacent developments:

- The park hosts the NCC's Canadian Tulip Festival providing opportunity for coordination and vibrant community interaction.
- Commissioner's Park has a tradition of displaying public art and commemorations such as *The Man with Two Hats* and Air India Victims Memorial.
- Park programming and events scheduled within Commissioner's Park include year-round seasonal interest providing increased access and maintenance efficiencies to park landmarks and amenities.
- Future Dow's Lake Pavilion improvements will enhance park user experience with access to improved facilities and amenities.
- Future Ottawa Hospital Campus is adjacent to preferred site providing health care professionals with the opportunity to access the future monument.

Public

7. Alignment with Government and NCC Policies

- NCC Mandate to “Guide and control the use and development of federal lands in Canada’s Capital Region; and maintain heritage sites in Canada’s Capital Region, such as ... commemorative sites.”
- NCC Plan for Canada’s Capital (2017-2067): The NCC will collaborate with Canadian Heritage and other federal departments and agencies to celebrate and commemorate key anniversaries of Confederation, significant events in Canadian History and Canada’s role on the world stage and as a land of democracy.
- NCC Capital Urban Lands Plan (2015): The proposal is in alignment with the Capital Urban Lands Plan by creating high quality and meaningful places that contribute to the inspiring character of the Capital.
 - The proposal is consistent with the Capital Urban Lands Plan’s policy to create signature spaces that build the Capital experience through well-integrated commemorations, public art and interpretation.

8. Risks and Mitigation Measures

Risk	Likelihood	Impact	Mitigation Measure
Contaminated soils	High	Moderate	Project specific geotechnical study, soil sampling and development of a soil management will be required to mitigate the presence of contaminated soil.
Coordination with adjacent ongoing projects	Low	Minor	The Ottawa Hospital Campus Project and O-Train construction projects are well underway. Coordination with stakeholders has been initiated and NCC will continue to monitor developments.
Delay in receiving site selection land use approval	Low	Moderate	The approved site selection is the validation intended to accelerate the CPMF fund raising campaign. Initial funds will be used for upfront soft costs associated with the design competition and development.

Public

9. Public Engagement and Communications

CPMF is responsible for public consultation and stakeholder engagement for the national monument in Commissioner's Park. CPMF with the assistance of PCH have thus far been committed to a thorough and inclusive approach to stakeholder and public engagement and are moving ahead with the development of a public engagement strategy.

There are active communities adjacent to Commissioners Park requiring public outreach. The CPMF has reached out to community members to gather feedback and gain support to achieve site selection approval and secure the land for the next 3 years. The foundation intends on responding to questions and informing the public of major project milestones.

Letters of support for a National Paramedics Monument have been provided by:

- First Nations Paramedics (FNP)
- Paramedic Association of Canada (PAC)
- Alliance of Canadian Paramedic Honour Guards
- Ontario Association of Paramedic Chiefs
- Member of Parliament: Yasir Naqvi

10. Next Steps

- Initiation of National Fund-Raising Campaign – Spring/Summer 2025
- Development of a multi-party project agreement covering project procurement, delivery, and custodianship transfer between NCC/PCH/CPMF – Winter 2025
- Development of Program and Design Guidelines – Summer 2025
- Presentation of Design Guidelines to ACPDR – Fall 2025
- Design Competition – Winter 2025/2026

11. List of Appendices

Appendix A – Site Context
Appendix B – Site Location
Appendix C – Site Images

12. Authors of the Submission

- Alain Miguelez, Vice-President, Capital Planning (CP)
- Isabel Barrios, Director, Federal Approvals and Heritage, and Archaeology Programs (FAHA), CP

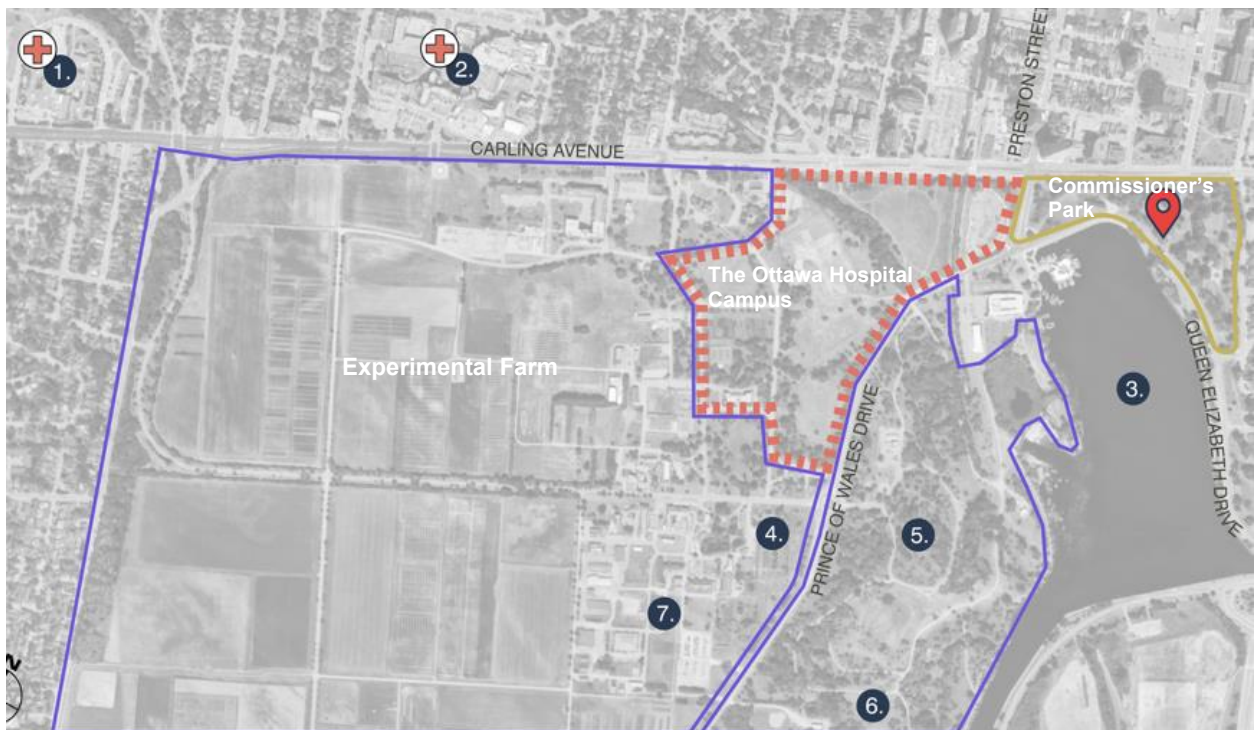
Public

- Jason Hutchison, Chief, Federal Design Approvals, FAHA, CP
- Shaun Barattia, Senior Landscape Architect, Federal Approvals, FAHA, CP

Appendix A – Site Context



Callout Diagram of Commissioner's Park with preferred site location in Capital Context.



Preferred site location in context with Institutions and Landmarks. 1. Royal Ottawa 2. Ottawa Civic 3. Dow's Lake 4. Ornamental Gardens 5. Dominion Arboretum 6: Fletcher Wildlife Gardens 7. Agriculture and Food Museum

Appendix B – Site



Aerial View of Site Location within Commissioner's Park.



The preferred site location for approval. (1) *The Man with Two Hats* (2) Air India Victims Memorial

Appendix C – Site Images



Aerial mapping of point of view images.



The preferred site location looking north from Queen Elizabeth Drive.



The preferred site location for approval. (1) *The Man with Two Hats* (2) Air India Victims Memorial

